



*Helping Children & Their Families*

## Aviva “Goes to the MAT” to Find Solutions

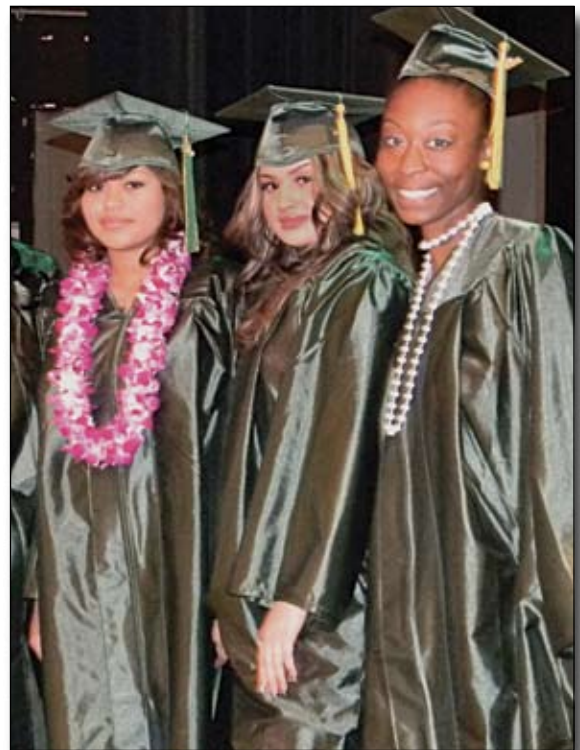


MAT team members (l to r) Judith Torres, Robin Felix, Mari Halpert, Sharon Moore, Janette Gallegos; Jay Mosoff and Mahin Alamdari (not pictured is Araceli Ortiz).

## 2010 Graduates Follow Their Dreams

On June 17, Aviva High School proudly celebrated the graduation of three high school seniors and two middle school eighth graders. The ceremony was held at the beautiful Temple Israel of Hollywood across the street from Aviva’s Wallis Annenbrg Center. The weather was warm and the sun was bright – the perfect setting for our beaming graduates.

continued on page 4



(l-r) Vanessa, Heidi and Ronesha, the Class of 2010

### INSIDE THIS ISSUE

2	Message from the Board	6	Volunteers
3	Welcome New Board Members	8	Gala Highlights
5	Corporate Partners	12	Donor Recognition

Removing a child from his or her home is a dramatic step, one that the county Department of Family and Children’s Services does not undertake lightly. And when it is necessary, the hope is that it is just the first step towards improving the circumstances and ultimately returning the child to the home and family.

continued on page 4

## A Message from the Board Chair, and President/CEO



WENDY WOLF *Board Chair*



ANDREW DIAMOND, LCSW  
*President & CEO*

Dear Friend,

As you read through the pages of this newsletter, we hope you will share our pride at the countless ways in which Aviva's board of directors, staff, volunteers, and supporters – such as you – are making a difference in the troubled lives of the 5,000 youngsters we serve each year.

It is only through the caring support of Aviva's "extended family" that we are able to continue providing best-in-class programs for the children we serve in an environment of dwindling resources, fraught with bureaucratic, political and educational challenges. The systems in place to manage the care of foster care children with severe problems are hopelessly broken. Either the federal, state, local, and educational jurisdictions are out of touch with the needs of the foster care population or their decisions are driven solely by cost, political concerns or bureaucratic constraints.

There is a trend throughout the country to reduce the number of children in out-of-home care, including those in residential settings like Aviva. We all agree that children should not be placed in residential settings or foster homes if there are appropriate resources to aid them within their own families. For years, Aviva Family and Children's Services has provided counseling in the home to strengthen families with the aim of avoiding out-of-home care, while ensuring the child's safety and well-being.

When a child is referred to a residential treatment center it is usually a placement of last resort. It occurs only when all efforts have failed to keep him or her at home or in a foster home able to meet the youngster's needs. Instead of choosing the "best placement" for the child's first foster home, frequently it is the "least restrictive environment" that is the preferred environment. Too often that translates to mean "the least expensive" option will do. It is extremely rare that the selection is based on the "least restrictive, *and most appropriate*" option for a foster care child.

There is also a push toward shorter placements, which sounds sensible, but in a bureaucratic system it rarely gets applied on a case by case basis. While shorter

continued on page 3

### BOARD OF DIRECTORS

#### BOARD CHAIR

Wendy Wolf

#### VICE CHAIRS

Susan Casden

Carol Stulberg

#### PRESIDENT & CEO

Andrew Diamond, LCSW

#### TREASURER

Dellene Arthur

#### SECRETARY

Linda May

#### CHAIR-ELECT

Robin Broidy

#### BOARD OF DIRECTORS

Bruce Andelson

Sherman Andelson

Lili Bosse

NancyJane Goldston

Evon Gotlieb

Lola Levoy

Shelley Curtis Litvak

Lawrence Lokman

Sandra Milken

Jade Mills

Lisa Mindlin

Kim Selby

Michael Sherman

Richard Sherman

Candace Foy Smith

Barbara Van Wormer

#### COUNCIL OF GUARDIANS

Elliott Broidy

Patricia A. Brown

Hon. Gray Davis

Teri Hatcher

Nancy Josephson

Councilman Paul Koretz

Councilman Tom LaBonge

Barbara Lazaroff

Arthur Levine

Lauren Leichtman

Marlee Matlin

Tracee Ellis Ross

Sharon Stone

Sheriff Lee Baca

Carolyn Strauss

Hon. Antonio Villaraigosa

Hon. Henry Waxman

Richard J. Welch

Hon. Steve Westly

Bruce G. Willison

Hon. Zev Yaroslavsky

#### Aviva Family and Children's Services

7120 Franklin Avenue, Los Angeles, CA 90046

Tel: (323) 876-0550 Fax: (323) 436-7042

Web: [avivacenter.org](http://avivacenter.org)

Email: [ask\\_us@avivacenter.org](mailto:ask_us@avivacenter.org)

AFCS is a not for profit, non-sectarian agency providing intensive residential treatment and diagnostic services, special education, therapeutic foster homes and community mental health services for abused, neglected and emotionally troubled adolescents, children and families. Programs are designed to build on family strengths and to help our clients prepare for independent lives in the community.

Aviva is accredited by: Council on Accreditation and Western Association of Schools and Colleges

Aviva is a member of:

American Association of Children's Residential Centers • Association of Community Human Services Agencies • California Association of Services for Children • JFC • United Way



AVIVA NEWSLETTER – Layout & design:

Douglas Design & Associates,

[tim\\_raasch@sbcglobal.net](mailto:tim_raasch@sbcglobal.net) – 805.660.2629

## Message *(continued from page 2)*

placements were (rightfully) designed to ensure that children did not grow up in foster care, many bureaucrats now interpret it as an absolute rule that prohibits placements as long as six months regardless of a need for continuing treatment.

It is not just the placement system and the courts that fail the high-end child in need of placement. The Los Angeles Unified School District similarly ignores the needs of this exceptionally vulnerable population. The District's "proactive" programs have not effectively sought out students in need of special education and other support services. Most children coming into our residential treatment program have endured ineffective and inappropriate interventions, suspensions, expulsions, and transfers before falling far enough behind to be assessed for special education. Once these children arrive at Aviva's door, the District takes up to three or four months to assess them for the services it should have provided years earlier. Throughout this delayed assessment process, during which Aviva receives no compensation, we provide scholarships for all of these girls.

We work hard to ensure that any child referred to us for residential treatment is not "rushed through" the treatment program and that every child receives the appropriate education in spite of the pressures resulting from the unrealistic timetables imposed.

We thank you all for supporting those efforts, for being part of Aviva's "extended family," and for partnering with us to make this possible.

Sincerely,

Wendy Wolf, *Chair*

Andrew Diamond, *President/CEO*

## A Board Member Welcome To –



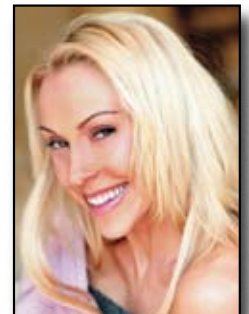
**Bruce Andelson** – *L'Dor V'Dor* (from generation to generation) best epitomizes the incredible concern and dedication that Bruce Andelson, our newest member of the Board of Directors, and his family, have shown for Aviva for many years. Following in the footsteps of his esteemed father and mother, Sherman and Mim, who are also Aviva Board members, Bruce looks forward to helping the agency continue providing the best possible programs and services to the at-risk children, adolescents and families we serve.

A magna cum laude graduate of Brown University, Bruce subsequently earned a law degree from Stanford Law School and became a respected practicing attorney, member of the State Bar of California, the Los Angeles Bar Association, the Advisory Council for the City Attorney of Los Angeles, and the State Bar Joint Advisory Committee on Continuing Education where he served as a lecturer of continuing legal education. Most recently, Bruce joined the Century City law firm of Greenberg Glusker as a partner in its Business and Tax Group.

Married with two adult children, Bruce and his wife, Jan, an emergency room nurse, reside in Tarzana.

We are thankful that Bruce has chosen to carry on a family tradition by joining Aviva's Board.

**Kim Selby** – A multitude of causes benefit from her extensive volunteerism and philanthropy, yet very close to her heart are the children and families served by Aviva. Kim's commitment is demonstrated through her participation in the Platinum Associates and her hands-on efforts to make a difference for the girls at the Wallis Annenberg Center, and for the at-risk youth in all of our other programs. In recognition, we were honored to present Kim with the Aviva 2010 Impact Award at this year's annual "A Gala" dinner.



In addition to her work for Aviva, Kim and her husband Rick, also an Aviva 2010 Impact Award honoree, serve on the Advisory Board of the Pink Party benefiting the Cedars-Sinai Women's Cancer Research Institute, the Board of the Union Rescue Mission, the Foundation for the Calvary Church and School, and other charitable organizations.

An accomplished champion ice skater in her younger years, Kim, together with Rick, and their children, Kelsey, Chloe, and Ricky, enjoy an active lifestyle that includes traveling, skiing, ice-skating, mountain biking, rollerblading and swimming .

Aviva proudly welcomes Kim to our Board of Directors.

## **MAT** (continued from front page)

The second critical step is for both the child and family to be assessed by a Multidisciplinary Assessment Team (MAT). Aviva is one of a few select agencies qualified to conduct these comprehensive psychosocial assessments, which determine the services most needed by the child and the family. Aviva's MAT team addresses several areas, including developmental, educational, medical and dental, family, and vocational needs.

A recent case handled by Aviva staff illustrates the impact a thorough MAT assessment can have in the life of a child and his or her family. Daniel, a 10-year-old boy, had been removed from the home due to alleged physical and emotional abuse by his parents. His father was a chronic alcohol abuser, and the parents' relationship was marked by domestic violence. The boy not only had to deal with the stress of the family dynamic, but also struggled with Asperger's Syndrome, an autism-related developmental disorder. He had poor social skills and was not accepted by his peers. As a result, he had very low self-esteem and initially told the assessor, "Everybody hates me." Daniel's mother was culturally predisposed to keep family problems to herself, making it even more difficult for her son.

The MAT assessment process increased Daniel's mother's willingness to open up about the family's problems and to request support. She was referred for individual therapy, domestic violence counseling, parenting classes with a support group for parents of autistic children, and to Al-Anon. Daniel's father entered inpatient rehab for substance abuse and received referrals for therapy, domestic violence counseling, and parenting classes. Daniel was referred to a Regional Center for one-on-one training to improve his social skills, and to an after-school program in martial arts to aid his gross motor skills and to create opportunities for socializing with his peers.

When Daniel returned to his school, the principal and students embraced him. Daniel later reported to the assessor that, for the first time in five years, he finally had friends at school. Daniel's Asperger's disorder will continue to provide challenges for him, but now he is getting the support needed to make positive strides in his young life.

## **2010 Graduates** (continued from front page)

Our high school graduates, Ronesha, Heidi and Vanessa, and our two middle school graduates, Erica and Selina, were joined by their friends and families for the occasion. Heidi was the first to give her speech. Almost immediately after her first sentence, her voice began to shake and tears began to fall. Heidi bravely persevered, but after nervously losing her place in her speech a few times, she decided simply to speak from her heart. The strongest message she had for her classmates was, "Don't be a follower, be a leader!" At one point, specifically addressing her mother who was sitting in the audience, Heidi said, "Mom, I'm sorry for putting you through those tough situations, and I love you." Her mother could be seen mouthing back to Heidi, "I love you, too." Heidi plans to attend college and pursue a career in Criminal Justice.

Vanessa was next to speak. Overcoming her nervousness, Vanessa said to the audience, including the other Aviva High School students, "Many people told me that I was never going to finish high school. But, here I am proving everyone wrong...I feel that everything happens for a reason, and I know that the reason I came here was to

*"...To every teacher, staff member and supervisor, thank you for teaching me common sense." – Ronesha*

*"...many people had faith in me like my parents, friends and Aviva." – Vanessa*

learn from my mistakes and not make the same ones again." Vanessa also set aside her prepared speech to thank those she felt had helped her the most during her toughest years, saying, "Although there were many people who doubted me, many people had faith in me like my parents, friends and Aviva." Vanessa is currently attending Associated Technical College where she is earning her Medical Assistant's Certificate and aspires to be a nurse.

Ronesha was the last senior to address the audience. She started out with, "I am 20 years old and I am the oldest student to graduate from Aviva." Ronesha then shared some of the struggles she faced while attending Aviva, including the death of her father. She noted that, rather than hindering her, those struggles encouraged her to reach her goal. Ronesha also shared a message to her peers and a heartfelt note of appreciation to everyone who worked with her: "When you fall, you have to get back up and try again...To every teacher, staff member and supervisor, thank you for teaching me common sense. You deserve a medal for putting up with the things you do...You are all great and I know it is not an easy job." Ronesha plans to study Mortuary Science and Business with the hope of opening her own funeral home.

Aviva High School's Class of 2010 inspires us all. Our students continue to overcome devastating odds to earn their high school diplomas and continue on to college. We will be honored once again in June 2011 as more of Aviva's young ladies celebrate their achievements and look forward to their bright futures.

## Aviva's Corporate and Business Partners

In 2007, Aviva embarked on an ambitious campaign to reach out to corporations and businesses interested in helping our agency while strengthening their ties to the community through financial assistance or grants, in-kind donations and direct service volunteer activities.

Over the years, the response has demonstrated the tremendous care and concern our business neighbors have for the more than 5,000 at-risk children, adolescents and families who utilize Aviva's social service, mental health and educational programs each year.

In this edition of the newsletter, we would like to express our appreciation to...

...Cassandra Contreras, Nancy Callahan, Elisa Strathearn and Janet Romero, from the

Community Service Committee of the Los Angeles law office of Bingham McCutchen, for providing the girls at the Wallis Annenberg Center a delightful and fun June afternoon of crocheting followed by an ice cream social. The girls thoroughly enjoyed learning how to crochet, and the ice cream was delicious! We especially thank Cassandra for coordinating all of Bingham's volunteer activities for Aviva, including a recent donation to



Cassandra Contreras (l) and Jessica Lewis (r) from Bingham McCutchen deliver 40 backpacks filled with school supplies.

the students at Aviva High School of 40 backpacks filled with school supplies.

Wells Fargo Bank Branch Manager Tigran Sargisyan for once again choosing Aviva as his branch's recommendation for a Los Angeles Metro Region's 2010 Community Grant which was awarded at a breakfast held at the Skirball Cultural Center on August 12.

...Reggie Reagor, Mayon Denton and Derek Werthwein of DRG Films for donating their time and energy to update our informational video.

...Starbucks and Store Manager Samantha Hogan, at the W. Cahuenga & Barham location, for their ongoing donations of unsold bakery items to the girls at the Annenberg Center. This gift, which is always thoroughly enjoyed, is coordinated nationally for Starbucks and other restaurants by the Food Donation Connection, Knoxville, TN.

And finally, thank you to all the Aviva supporters who successfully solicited items for the on-line Charity Buzz auction held in conjunction with our 2010 "A Gala" and to the following generous donors:

*Beverly Hills Plastic Surgery Group  
Carol Stulberg Fine Jewelry  
Charlie Lapson Collection  
City National Bank  
Dr. David Frey, DDS  
Ezulwini Game Lodge  
Judith Leiber  
Markus and Sharolyn Leithold  
Malibu Beach Inn & Carbon  
Beach Club*

*Miu Miu Rodeo Drive  
Monique Lhullier  
Ready-to-Wear Collection  
Prada  
Anthony and Jeanne Pritzker  
Puppet Boy Entertainment  
Rae Designs/Rosie Noorani  
Rebecca Molayem  
Roclord Studio Unconventional  
Portrait Photography*

*Ron Flurry for Lakers tickets  
Rosewood Cordevalle Resort  
Someone's in the Kitchen  
Sonny Alexander Flowers  
The Montage Laguna Beach  
The Peninsula, Beverly Hills  
The Streisand Foundation  
Z Valet and Shuttle Service*

Call **Marty Spatz**, Corporate Partner Liaison, at (323) 876-0550, ext. 1107 today to learn how your business, or other businesses you know, can "partner" with Aviva in helping the at-risk children and adolescents we serve.

## L.A. Works and Aviva: An Eight-Year Partnership

Over the more than eight years that Aviva has partnered with L.A. Works, this dynamic, prominent volunteer action organization has provided us with hundreds of volunteers leading countless activities to benefit the girls in residence at the Wallis Annenberg Center. An important side benefit of the relationship is the exposure the girls receive to a variety of positive adult role models. It's a revelation to some of our girls that people volunteer their time, talent and effort because they care about their well-being and neither want nor expect to receive anything in return but a smile! Being around positive volunteers also allows the girls to see beyond their narrow and often negative life experiences and start to expand their horizons.

One of the L.A. Works volunteers is William Blanco. William, a student who also works in the busy restaurant industry, still finds time to volunteer. He not only leads monthly activities, he finds volunteers to run special

classes he thinks the girls will enjoy. He has brought in a variety of talented volunteers ranging from chefs who teach quick and healthful meal preparation, to dance instructors. Of course, he also schedules two of their favorite activities: volleyball and karaoke!

When we asked William to comment on his experience at Aviva, he had this to say:

*"In the short time that I've been volunteering at Wallis Annenberg Center,*



*I've learned a lot about the joy of giving. The staff is always welcoming and most of the girls look forward to participating. Some are resistant at first and challenge me to find a project that will engage them and teach them a valuable life skill. Aviva has not only allowed me to give my time but to learn a lot about myself, and I truly am thankful for that. I look forward to continuing to volunteer for years to come."*

We are deeply grateful to William and the other volunteers from L.A. Works who could spend their limited free time doing any number of other things, but they choose to give back. Aviva values its partnership with L.A. Works.

If you are interested in volunteering, please call our volunteer office at (323) 876-0550, ext. 2504.

## STERLING HIGHLIGHTS

The Sterling Associates met at Aviva in early July for a lunch devoted to planning and brainstorming events for the upcoming membership year. To kick off an exciting season of activities, the Sterlings will hold a Wine Tasting which, in addition to being a lot of fun, will help to underwrite the events that the group sponsors for the young ladies who reside at Aviva's Wallis Annenberg Center.

Such events include the annual awards banquet in October, where the girls enjoy an elegant evening

of dinner while receiving awards for academic and behavioral achievement, and the annual Tree Trimming Party in December.

We invite women from the community to step up and join this group of talented and energetic individuals who enjoy planning and participating in activities with the girls of Aviva. To join the Sterling Associates or for more information, please email [drutigliano@avivacenter.org](mailto:drutigliano@avivacenter.org) or visit our website at [www.avivacenter.org/volunteering](http://www.avivacenter.org/volunteering).

Save the Date –  
October 20

J. MENDEL

There will be a personal appearance by Mr. Gilles Mendel who is the creative force behind J. Mendel line of clothing and furs. The fashion presentation will be the first showing of the Spring 2011 collection after it's September debut on the runway during New York City's Fashion Week.

Saks Fifth Avenue has graciously offered to sponsor the luncheon for a second year. The luncheon will be held on the rooftop of The London Hotel with its spectacular view overlooking Los Angeles.

*Saks  
Fifth  
Avenue*

For more information,  
call (818) 981-9950 or  
email [aviva@yifatoren.com](mailto:aviva@yifatoren.com)

## Second Annual Day of Beauty and Inspiration

The Beverly Hills Women's Club sponsored and hosted the second annual Day of Beauty and Inspiration for the girls at the Wallis Annenberg Center. The girls received mini-makeovers by professional hair stylists and makeup artists and participated in workshops self-esteem and the possibilities of achieving dreams and goals. The girls had their photos taken and received gift bags filled



with many goodies. The day was truly a great success.

On the way back home, many of the girls expressed appreciation and amazement that people would organize

such a nice event out of the kindness of their hearts for teenagers they do not even know. Other girls commented on how they would like to be able to do the same for others when they become adults. This event clearly touched and inspired the young ladies of Aviva. A special thank you to Claudia Deutsch, and the members of the Beverly Hills Women's Club, for giving our girls a day they will not soon forget!

## Fun in the Sun and Cool in the Pool

Mitra Mansouri is a good friend of Aviva, and particularly to the girls at the Wallis Annenberg Center. For several years she has hosted events that the girls truly enjoy, especially her annual pool party held each August.

The girls enjoyed a day of swimming, playing in the sun, and participating



in games, craft booths and photo opportunities. When it was time

to leave, the girls received great gift bags packed with clothing and other treats.

Thank you, Mitra, for thinking of our girls throughout the year and for making such a positive impact on their lives.

## Aviva Girls Walk to Help in the Fight Against Breast Cancer

The day began at 7 a.m. last March, as the girls from the Wallis Annenberg Center excitedly prepared to head out to the Susan B. Komen Breast Cancer Walk at Dodger Stadium.

The girls were sponsored by various generous donors to the Cancer

Foundation, which allowed them to participate in the race. The girls walked, skipped, ran, and hopped, keeping up their energy until the finish line was reached. Their pride showed in every step they took.

Thank you to our sponsors for giving Aviva's girls the opportunity to

give back! Being involved in community projects or volunteering helps the girls learn that they can contribute and is an important step in improving their self-image. We hope to have a larger group next year!



Aviva's Director of Gang Intervention and Prevention, Audruin Pittman (second from left) and Gang Intervention and Prevention Youth Counselor Jennifer Alfaro (far right), are shown with LAPD Captain Peter Whittingham (far left) and Mayor Antonio Villaraigosa at Lemon Grove Park Summer Night Lights, sponsored by the Mayor's Office of Gang Reduction and Youth Development. Aviva led parent workshops at the well-attended event.

Aviva’s “A Gala”, held at the Beverly Wilshire Hotel on April 17, was a unique, creative fundraiser that transported more than 400 of our supporters back to a 1940’s Supper Club for a Saturday evening that began with “dessert first” during the cocktail reception, followed by exceptional dining, and concluding with a very cool after-party featuring more desserts as well as music and dancing.



Honorees Kim and Richard Selby



(l to r) Aviva board members Susan Casden and Robin Broidy with Larisa Sabadash



Mim and Sherman Andelson, Aviva board member



## Step Back In Time



Gala Co-Chairs Karen Pappas and Robin Broidy



More importantly, the “A Gala” celebrated both the invincible spirit of the at-risk youth and families Aviva has continually served since 1913 and the outstanding contributions of our four distinguished honorees who are extraordinarily committed to helping Aviva and the community. The Gala also afforded Aviva the opportunity to introduce our agency to people in the community who may not know about the essential social service, mental health and educational programs we provide each year to more than 5,000 of Los Angeles’ most troubled children and adolescents.



Dean and Wendy Greuel, Los Angeles City Controller



(l to r) Angelique, a former resident of Aviva’s Wallis Annenberg Residence and Wendy Wolf, Board Chair

## The “A Gala” – continued



◀ Andrew Diamond, Aviva President and CEO and Teri Hatcher, Impact Award recipient.



Carol Stulberg, ▶ an Impact Award recipient and Aviva Board member with her husband Jac

This year's honorees, all winners of Aviva's 2010 Impact Award, are philanthropic leaders who demonstrate their concern for those in need by their involvement in a wide range of local, national and worldwide charitable causes.

The honorees were:

- Carol Stulberg, an active, innovative member of Aviva's Board of Directors, a Platinum Associate and a successful jewelry designer;
- Kim Selby, a Platinum Associate; and newly-elected member of Aviva's Board of Directors
- Rick Selby, an Aviva Benefactor, a real estate developer and the husband of Kim Selby; and
- Teri Hatcher, an award-winning actress who also was a previous recipient of Aviva's Spirit of Compassion Award.

Congratulations once again to all these cherished Aviva supporters!



Candace Foy Smith, Aviva board member





Laura Alpert (l) and Susan Rothenberg,  
Platinum Associate members

While everyone enjoyed, and was amused by, the surprise of dessert before dinner, the evening also brought both tears and much applause as Angelique, a former resident of the Wallis Annenberg Center emotionally described how Aviva helped her overcome the many obstacles she had faced in her young life while in out-of-home placement and as a student at Aviva High School. Now working full time and studying Information Technology in the hope of one day working in the aerospace industry, Angelique is the proud parent of three beautiful children for whom her goal is to be a positive role model who can “teach them the importance of education, perseverance and personal responsibility.” Grateful to Aviva for “never giving up on me,” Angelique thanked the audience for helping keep Aviva available, now and in the future, for other children and adolescents “going through experiences similar to mine.”



Lola Levoy, Aviva board member



John Hanwell and Barbara Lazaroff, Council of Guardian member

Our special thanks for organizing this magnificent evening go to Gala Co-Chairs Robin Broidy and Karen Pappas; Honorary Gala Co-Chairs Wallis Annenberg and Nancy Josephson; and the Gala Committee that included Debbie and Joseph Helman, Johanna Judah, Deb and Marc Lerner, and Lisa Mindlin. A special thank you to our live auction donors: Anthony and Jeanne Pritzker, Alan and Susan Casden, and Elliott and Robin Broidy.

Aviva's 2010 "A Gala" was a tremendous success. Looking back on that April night we are assured that Aviva's future is bright!

# Donor Recognition

*Aviva gratefully acknowledges its donors. These gifts make the work we do possible!*

## Leader's Circle – \$25,000 and up

Jon and Lili Bosse  
Elliott and Robin Broidy  
Guggenheim Investment Mgmt.  
Elaine Invemed Associates LLC  
Richard Merkin  
Sandra Milken  
WME Foundation

## Benefactors – \$10,000- \$24,999

Wallis Annenberg  
Robert and Suzy Barth  
Calvin Klein Family Foundation  
City National Bank  
City of West Hollywood  
Coto Foundation  
Jewish Federation Council of  
Greater Los Angeles  
The Marilyn and Jeffrey  
Katzenberg Foundation  
Wendy Wolf and Mitch Menzer  
Occidental Petroleum  
Richard and Kim Selby  
United Way of  
Greater Los Angeles  
Scott Watt  
Steve and Anita Westly

## Patrons – \$5,000 - \$9,999

Sherman and Mim Andelson  
Frank and Katherine Baxter  
Martin and Carolyn Bloom  
Change A Life Foundation  
Clay Lacy Aviation  
The David Geffen Foundation  
The Edelstein Family  
Charitable Foundation  
Mark and NancyJane Goldston  
David and Marty Hamamoto  
Vicki Martin and  
Preston Johnson  
Richard and Suzanne Kayne  
John and Debbi Landsberger  
Latitude Management  
Real Estate Invest., Inc.  
Jay Leupp  
Lauren Leichtman and  
Arthur Levine  
Bradley and Lisa Mindlin  
Moss Foundation  
Dana Pachulski  
Mel and Susan Plutsky

Anthony and Jeanne Pritzker  
Ruth/Allen Ziegler Foundation  
Richard and Barbara Sherman  
Anne Solbraekke  
Jac and Carol Stulberg  
The Van Konynenburg  
Foundation  
Warner Brothers  
Wells Fargo

## Partners – \$1,000 - \$4,999

David and Maria Alden  
Hal and Jeri Alden  
Harvey and Laura Alpert  
Andrew Weiss Gallery  
Anonymous  
Michael and Dellene Arthur  
Jo-Ann Asiru  
The Atlas Family Foundation  
Stephen and Joy Auerbach  
Fran Aversa  
Mandana Azad  
Andrew and Avery Barth  
Beverly Hills Women's Club  
Daniel and Angela Blatteis  
Breslauer, Rutman &  
Anderson LLC  
Harold and Stephanie Bronson  
The Brotman Foundation  
William and Penelope Brown  
Sandra and Bruce Karatz  
Family Foundation  
Brad and Cheryl Cohen  
Coldwell Banker Residential  
Brokerage  
The David Bohnett Foundation  
Harold and Nadine Davidson  
Andrew and Jane Diamond  
DirecTV, Inc.  
Disney / ABC Television Group  
Domino Realty Mgmt. Co., Inc.  
Effective Risk Management  
Esper A. Petersen Foundation  
Eric and Susan Fleishman  
Steven and Darlene Fogel  
Galen Family Foundation  
Joel Geiderman, M.D.  
George and Agnes Gero  
Irwin and Maryann Gold  
Russell and Karen Goldsmith  
Jerry and Evon Gotlieb  
Browne and Leana Greene  
Jeff Gunter  
Deena Gussman

Andy and Dahlia Haas  
Hal and Cindy Harley  
Nancy Hayes  
Howard and Elizabeth Hirsch  
Hollywood Chamber of Commerce  
Steven and Karen Holzman  
Industrial Metal Supply Company  
JGE Capital Management, LLC  
Alan and Marta Kass  
Gina Knox  
Koret Foundation  
Jim and Juliana Kozen  
Barbara Lazaroff  
Kenneth and Elaine Leventhal  
Lola Levoy  
Rhonda Seaton and  
Lawrence Lokman  
Luminous Capital  
Gary and Maggie Maier  
Deborah Klein and Mort Marcus  
Jeff and Lisa Mazzarella  
John and Monica McEntee  
Milken Family Foundation  
Skip and Sherry Miller  
Adam and Jade Mills  
Morton Capital Management  
Jeff and Ilene Nathan  
Younes and Soraya Nazarian  
David and Angella Nazarian  
Nigro, Karlin, Segal &  
Feldstein, LLP  
George Novogroder  
Geoff and Anne Palmer  
Paramount Pictures  
Robert and Rachael Platt  
Ronald and Annette Plotkin  
Rick and Debbie Powell  
Powers Charities  
RAO Designs  
Dennis Roach  
Steven and Eden Romick  
Ronald McDonald  
House Charities, Los Angeles  
Mark and Linda Rosman  
Scott Rouse  
Elisa Joy Rubin  
Lee and Anne Samson  
Leonard and Corrine Sands  
Fred and Carla Sands  
Sapphire Seas LLC  
Jeff and Adele Schafer  
Donald and Susan Schwarz  
Bui Simon

Candace Foy Smith  
Marc and Eva Stern  
Beth Ann Styne-Schell  
Summa Group Children's  
Foundation  
Linda May and Jack Suzar  
Taube Foundation for Jewish  
Life & Culture  
Donald Tippet  
United Talent Agency/UTA  
Skip and Linda Victor  
Roger and Angelle Wacker  
Elyse Walker  
Ken and Cathy Weiss  
Martin Weiss  
Elizabeth Schwartz and  
Mitchell Weiss  
Wright Maritime Group  
Robert and Adrienne Zarnegin  
Richard and Daphna Ziman

## Advocates – \$500 - \$999

Moshe and Laura Aflalo  
Jeffrey and Cecelia Assaf  
Bachrach & Associates  
Matthew Barnes  
June Beallor  
Bernard Beiser  
Jack and Terré Bergman  
Steven and Brooke Bertram  
Jerry and Lois Beznos  
Anthony and Elaine Borquez  
Joseph Boskovich  
David Camel  
Cedars-Sinai Medical Center  
Terry and Patricia Christensen  
David Conney  
De Castro, West, Chodorow,  
Mendler, Glickfeld & Nass, Inc.  
Elman Family Foundation  
Executive Jet Management  
Bryan and Quinn Ezralow  
Marc Ezralow  
Ron and Jacqueline Feder  
Joseph Fryzer  
General Industry  
Gerber Pictures  
Gary and Cherna Gitnick  
Andrew Gross  
Judith Hayward  
Mikel Healey  
Joey and Debbie Helman  
Mark and Kelly Holscher  
Scott and Teresa Ingraham

Donations are for the period from March 1, 2010 through July 31, 2010. We apologize for any errors or omissions. If we have inadvertently omitted your name, please contact Michelle Cordero-Lee at (323) 876-0550 x1123.

## Donor Recognition *(continued)*

Johanna Judah  
Elliott Kajan  
Kavin Fence and  
Construction, Inc.  
Dorian Khouri  
Benn Konner  
Igor and Lisa Korbatov  
La Mancha Development Co.  
Honorable Tom LaBonge  
Debby Lerner  
Stan Maron  
Caryl Mindlin  
George Mitchell  
Suzette Mohammed  
Morton and Sally Ann  
Kishner Trust  
John Ohanesian  
Pacific Development Partners  
Greg Pimstone  
R. W. Selby & Co., Inc.  
Guy Ringler  
Robert A. Day Foundation  
Elaine Robinson  
Rick and Iris Ross  
Larisa Sabadash  
Jill Sattinger  
Savitsky, Satin & Bacon  
Michael Scott  
Sharon Sears Dunas  
SFJewelry, LLC  
Lili Shafai  
The Sheri and Les Biller Family  
Foundation  
Society of Women Engineers—  
USC  
Steve Pribyl, Architect, Inc.  
Christine Suppes  
Charles and Denise Tharnstrom  
Tylie Jones & Associates  
USC Athletics Department  
Ingrid Wang  
The Willametta K. Day  
Foundation  
The Winnick Family Foundation  
Wolff Family Private Foundation

### Supporters – \$100 - \$499

James and Sara Adler  
Adam Albright  
Linda Sherman and  
David Altzshuler  
Arlen Andelson  
Anita Arkin  
Fred Arnold  
Howard and Jackie Banchik  
Marissa Barth  
Donald and Althea Bassett

Tom and Tana Bernal  
Albert and Shiva Berookhim  
Stacey Blank  
Bettye Bogner  
Jeffrey and Rochelle Boren  
Laura Borsecnik  
Nancy Brazil  
Robert Bregman  
Gary and Linda Briskman  
Tana Burns  
W.H. and Allison Butler  
Nancy Campbell  
Challen Cates  
Edward and Renee Chanon  
Gary and Phyllis Chase  
Rafe and Susan Cohen  
Chris Cook  
Olivia Cohen-Cutler and  
Andrew Cutler  
Garrett Dailey  
Lorne Leach and  
Cephus R. Daniels  
Rob Davidow  
Warren and Elaine Deutsch  
Elizabeth Devin  
Tali Diamond  
Marilyn Dishell  
Eugene Dula  
Robert and Jaynee Eitel  
The Ella Fitzgerald Charitable  
Foundation  
Barbara Elliott  
Yelena Entin  
Jody Fasanella  
Patty Finkel  
Ronald Flury  
Philip Fowler  
Kara Fox  
Carol Fox  
Daveen Fox  
Bobbie Geller-Fields  
Ruth Gilliam  
Adam Goldberg  
Tamara Goldfeiner  
Amir and Tamara Goldfiner  
Delicia Goodwin  
Eugene and Madeline Goodwin  
Donald Gray  
Courtney Green  
Clint and Elisa Greenbaum and  
Sari Greenberg Glusker Fields  
Claman & Machtinger LLP  
Christopher and Laurie Harbert  
Ron and Shelly Harwood  
Owen Hatcher  
Marc and Stephanie Hayutin  
Danny Herold

Chuck and Hella Hershson  
Dieter and Michaela Hochheimer  
Andrea Hodges  
Blake Holden  
Linda and Holman  
James and Ada Horwich  
Sylvia Hussenjjan  
Jim and Leslie Hyman  
Glenn and Eve Jaffe  
George Jameson  
Alan and Michelle Kaye  
Randall and Sharon Keller  
Kathy Kendrick  
Richard and Myrna Kettler  
Ginny Kheshvadjian  
Michelle Kleinert  
Sharon Klinger  
Mark Kogan  
Jim and Sandra Kohn  
Steve Krantz  
Marissa Espinoza and Ira Kruskol  
Minnie Kwan Ng  
Laura Landesman  
Jeffrey Lee  
Leeds, Wender & Rosenfeld  
David Leonard  
Abby Jane Levy  
Ed and Lynn Lieberman  
Steve and Andrea Lurie  
Robert and Nancy Lurie  
Francis and Virginia Maas  
Fred Manaster  
Steven McClurg  
Judy Miller  
Brian and Angela Miller  
Thomas Morgan  
Michael and Christine Muench  
Nancy Abrams & Associates, Inc.  
Ronald and Donna Nasch  
Nestlé  
Nancy Hill-Holtzman and  
Jack Newman  
Debra Newton  
Rosie Noorani  
Jane Jelenko and Bill Noris  
Charles and Eileen Olsen  
Charles and Melissa Oman  
Rory Packer  
George Peper  
Barry Porter  
Lawrence and Sandra Post  
Janet Pucino  
CC Pulitzer-Leeman  
Annie Seaton and David Lewis  
George Rajacich  
Regional Properties, Inc.  
Michael and Geraldine Rice

Riteway Charity Services  
Robert and Mona Robaire  
Don and Teresa Roberson  
Mel and Beverly Rosenthal  
Jack Ross  
Mark and Diane Rudolph  
Bonnie Samotin  
Louis and Rita Schlanger  
Gregory Schultz  
Peter and Olga Schultz  
Macie Sears Scherick  
Craig Shapiro  
Scott Sheridan  
Louis Shore  
Alan Sieroty  
SKIN - Skincare for  
Kids In Need  
Samantha Smart  
Babette Sobel  
Martin and Linda Spatz  
Eugene and Carolyn Stoeckly  
Bill and Reva Tavelman  
Pauline Thomas  
Katrina Tippett  
Alan and Susan Tivoli  
Transamerica  
Elinor Turner  
Richard and Marcia Volpert  
Cathy Weingart  
Barry Weiss  
Sara White  
White, Zuckerman, Warsavsky,  
Luna, Wolf & Hunt  
Glen Williams  
Carolyn Suda and Warren Woo  
Randall and Jennifer Wooster  
Rob Word  
Peyhan Yadegar  
Rosalie Zalis  
Ari Zev  
Alan and Judith Zweig

### Friends – Under \$100

Addo Communications, Inc.  
Kerby Alvy  
Asch  
Ted and Barbara Bell  
Gary Berman  
Emily Boyle and Jonathan Biddle  
Matthew Blaylock  
Mary Brodin  
Ryan Brookhart  
David and Doris Brownstein  
Rafael Bruno  
Carryl Carter  
Cynthia Chan  
Clothes Off Our Back, Inc.

## Donor Recognition *(continued from page 13)*

Bob and Michele Cohen  
J. Patrick and Valerie Collins  
Jacqueline Contreras  
Michael and Rosalie Devine  
Jerry and Marcia Edelman  
Edison International  
Michael and Danette Eilenberg  
Jacqueline Fabe  
Debra Frank  
Heywood Friedman  
Loree Goffigon  
Aimee Golant  
Linda Goldfein  
Steven and Bari Good  
Christina Hampton  
Alvin and Jewell Harris  
Marni Hoffman  
Tanika Hurtt  
Jet Propulsion Laboratory  
Scott Johnson  
John and Cynthia Jones  
Arlene Joye  
Karpman & Associates  
Jules and Lila Kates  
Matthew Kavanaugh  
Robert and Lee Levey  
Tom and Barbara Linton  
Paul and Judith Lippe  
Megan Lungerhausen  
Diane Mandell  
Bruce Martin  
Sharon Mayer  
Ovvie and Diane Miller  
Steven Moyer  
Patton Oswalt  
Ryan Pinette  
Ellen Preston  
Alvin Quicho  
Jeffrey Rager  
Andrew and Carol Rigrod  
Donna Roth  
Marvin and Susan Rothenberg  
Raj Sardesai  
Seaborne  
Jeannine Sefton  
Adeline Stevens  
Sunshine  
Israella Sutnick  
Marcie Swartz  
Jill Tavelman  
Truist  
United Way CA Cap. Region—  
PCFDA Acct.  
Jill Weinberg  
Jack and Caroline Weingarten  
Lawrence and Bernice White

### In-Kind

David and Lisa Arden  
Beverly Hills Neuromuscular  
Beverly Hills Women's Club  
Big Sunday  
Elliott and Robin Broidy  
Burnham Benefits  
Alan and Susan Casden  
Caroline Victoria Coldicutt  
Arts Foundation  
Payman Danielpour  
Sara Delgado  
Bob Frear  
The David Geffen Foundation  
The J. Paul Getty Trust  
Maria and Teresa Gordon  
Holly Gores  
Teri Hatcher  
Samantha and Taylor Hayes  
Elizabeth Hinkson  
Harold and Dani Lancer  
Charlie Lapson  
Barbara Lazaroff,  
Imaginations Design  
Lauren Leichtman and  
Arthur Levine  
Monique Lhuillier, Inc.  
Los Angeles Dodgers  
Lowes Santa Monica Beach Hotel  
Mega Brands  
Virginia O'Brien  
Joann Roth Oseary  
Osh Hardware  
Peet's Coffee & Tea  
Penninsula Beverly Hills  
Mary Pickford Instit. for  
Film Education  
Helen and Christina Salazar  
Shelter Partnership  
Richard and Barbara Sherman  
Sisterhood Temple Beth Hillel  
SKIN - Skincare for Kids  
in Need Susan Wieder  
Sonny Alexander Flowers  
Jac and Carol Stulberg  
Rachel Sunday

### In Honor of

**Laura Alpert**  
Howard and Jackie Banchik  
Jeffrey and Rochelle Boren  
Emily Boyle and  
Jonathan Biddle  
Bob and Michele Cohen  
Michael and Rosalie Devine  
Michael and Danette Eilenberg  
Jacqueline Fabe

Kara Fox  
Linda Goldfein  
Steven and Bari Good  
Chuck and Hella Hershson  
Marni Hoffman  
Blake Holden  
Linda and Liz Holman  
John and Cynthia Jones  
Matthew Kavanaugh  
Bradley and Lisa Mindlin  
Marvin and Susan Rothenberg  
Jeannine Sefton  
Israella Sutnick  
Marcie Swartz  
Jill Tavelman

### Farhad Ariel

Albert and Shiva Berookhim

### Rebecca Bardsley

Sunshine

### Robin Broidy

Robert and Suzy Barth  
Donald Gray  
Clint and Elisa Greenbaum  
Gary and Karen Winnick  
Rosalie Zalis

### Cbris Jacobs

Scott Johnson

### Bill and Vi Friedland's

### Grandson Ben

Alvin and Jewell Harris

### Evon Gotlieb

Elinor Turner

### Alan and Janice Greenberg

Eugene and Madeline Goodwin

### Amy Martin Friedman

Mark Kogan

### Linda May

Michael B. Sherman  
James and Ada Horwich  
Minnie Kwan Ng  
Guy Ringle  
The Sheri and Les Biller Family  
Foundation  
Mary Brodin  
Rafe and Susan Cohen  
Betty Graham  
Ann Petersen and Leslie Pam  
Beth Ann Styne-Schell  
Patton Oswalt  
Don and Teresa Roberson  
Mel and Beverly Rosenthal  
Bill and Reva Tavelman  
Elaine Robinson

### John and Monica McEntee

Elliott and Robin Broidy

### In Memory of

#### Laurence Oseran

Bill and Reva Tavelman

#### Larry Scharf

Bill and Reva Tavelman

#### Helen Stulberg

Jerry and Lois Beznos

#### Barbara Zolla

Anita Arkin  
Gail Asch  
Ted and Barbara Bell  
Garrett Dailey  
Warren and Elaine Deutsch  
Carol Fox  
Marc, Stephanie, Sidley and  
Austin Hayutin  
Diane L. Karpman  
Sharon Klinger  
Leeds, Wender & Rosenfeld  
Paul and Judith Lippe  
Francis and Virginia Maas  
Diane Mandell  
Sharon Mayer  
Ovvie and Diane Miller  
Steven Moyer  
Nancy Hill-Holtzman and  
Jack Newman  
Andrew and Carol Rigrod  
Cathy Weingart  
Barry Weiss  
Sara White  
White, Zuckerman, Warsavsky,  
Luna, Wolf & Hunt



**Owner Dennis Rohde (l)  
with Andrew Diamond,  
President and CEO of Aviva  
at pre-grand opening of The  
Counter on Sunset Boulevard  
to benefit Aviva.**

# Around Aviva



## Aviva Vice Chair Receives Wallis Annenberg Public Service Award

Congratulations to Aviva Vice Chair Susan Casden on receiving the Wallis Annenberg Public Service Award from Operation Smile, a worldwide children's medical charity dedicated to helping improve the health and lives of children and young adults.

### WELCOME TO

#### Karen Womack

Karen has joined the Aviva team to take us to the next level of information technology— Electronic Health Records System (EHRS). We are fortunate to have found Karen, who has over 30 years of experience implementing software in both the corporate and government sectors. As our EHRS Project Manager, she will lead our team from design to implementation of the new system over the next 12-to-14 months.



#### Johanna Susal

We are pleased to welcome Johanna Susal as Volunteer Services Coordinator. Johanna comes to us from Jewish Family Service where she coordinated a senior adult education program in West Los Angeles. Most of her professional experience has been focused on the nonprofit sector and in education, where she has extensive experience in volunteerism, community outreach and marketing.



### EMPLOYEES OF THE MONTH

The employees at Aviva often go above and beyond the expectations of their job responsibilities, and they all deserve recognition. Each month, nominations are submitted for Employee of the Month, and the Employee Recognition Committee selects a winner. We congratulate the following employees whose job performance greatly exceeded expectations during the month for which they were selected.

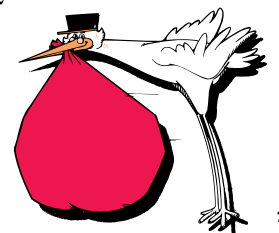
#### Employees of the Month

- January – Rey Soto, *Educational Case Manager*
- February – Norma Ramos, *Housekeeper*
- March – Brenda Prudencio, *Case Manager*
- April – Nancy Tarin, *QI Assistant*
- May – Margie Cruz, *RC*
- June – Beth Kaufman-Ryker, *LCSW, Residential Therapist*
- July – Tom Nelson, *Aviva High School Teaching Assistant*



### CONGRATULATIONS TO THE FOLLOWING EMPLOYEES ON THE BIRTHS OF THEIR CHILDREN DURING 2010:

- LaSonya England, *Residential Counselor* .....gave birth to Kayah Hunter on February 15
- Tamara Carson, *Facilitator* .....gave birth to Tamar on June 4
- Michelle Cordero-Lee, *Grant Writer* .....gave birth to Joshua on June 11
- Francesca Woods, *Residential Counselor Supervisor* .....gave birth to Fallon on July 28
- Lisa Dena, *Aviva High School Office Manager* .....gave birth to Noah on August 28



## HELP CREATE HOLIDAY MAGIC

Before you realize it, the holidays will be upon us. This is the time of year that we begin planning our toy collection for the children and teens served in our programs.

Each year we reach out to friends in the community to help us fulfill the simplest and purest of childhood wishes – to open a gift wrapped in shiny and brightly decorated holiday paper. Nothing beats seeing a child or teenager's sad eyes become bright and irrepressibly curious as he or she is given a gift to open. That moment when a youngster realizes that the wished-for remote control car or first portable stereo is truly his or hers is magical, not only for the child, but for the staff who care for Aviva's young people.

You can share in the magic. We hope you will consider adopting Aviva and hosting a holiday toy drive at your home, office, synagogue, or church. Or, if you have a party during the holidays, please consider asking your guests to bring a new, unwrapped gift, such as those listed below, for a child or teenager. We promise everyone will feel the true spirit of the holidays at your party!

- Action figures
- Arts and craft supplies
- Bathrobes & slippers (for teen girls)
- Beanie Babies/stuffed animals
- Body lotions/splashes/colognes
- Books – fiction and non-fiction – all ages
- Boom boxes or radio alarm clocks
- Building toys – Legos, etc.
- Cars – micro, remote
- Card games – Uno, Old Maid, Go Fish
- CD players with headsets
- CDs – popular artists – radio version only
- Diaries/journals
- Dolls – all ethnicities
- DVD movies (G-PG 13 only)
- Exercise equipment – small items such as balls, bands, yoga mats, thigh masters
- Gift certificates for teens (dept stores, music, sports, movie, fast food, ice cream)
- Hair accessories/products – flat irons, blow driers, gels
- Hand held electronic games
- Jeans – new, popular styles (Applebottom, Levi, etc.)
- Jewelry – costume, teen-style
- Magazine subscriptions (Teen People, 17, Latina, Teen Vogue)
- Make-up kits – real make-up
- Organizers
- Photo frames or albums
- Posters – movies PG style/ motivational/music – boy/girl singers/bands
- Radios/alarm clocks
- Shoes – flip flops, tennis shoes (women's sizes)
- Sports balls (basketballs, footballs, soccer balls)
- Stereos – small, portable style
- Twin comforters (for teen girls)
- Wallets (teen girls and boys style)
- Watches (teen girls and boys style)



For details about fulfilling specific wishes our children, contact **Arlene Joye** at (323) 876-0550 ext.1104 or via email at [ajoye@avivacenter.org](mailto:ajoye@avivacenter.org).